



## NAVIGARE CHARTER FLEET 2019

### Annex 1- OCEANIS 46.1 - GRE

#### SPECIFICATIONS

#### OCEANIS 46.1

LOA (meter)	14,60
Beam (meter)	4,50
Draft (meter)	2,35
Light Displacement (kg)	10 600
Engine (Hp)	80
Sail area furling main & genoa (m <sup>2</sup> )	103
Cabins	4
Toilettes	4
Steering wheels	2
Registered number of guests (RNOG)	10
Diesel tank (liter)	200
Water tank (liter)	570



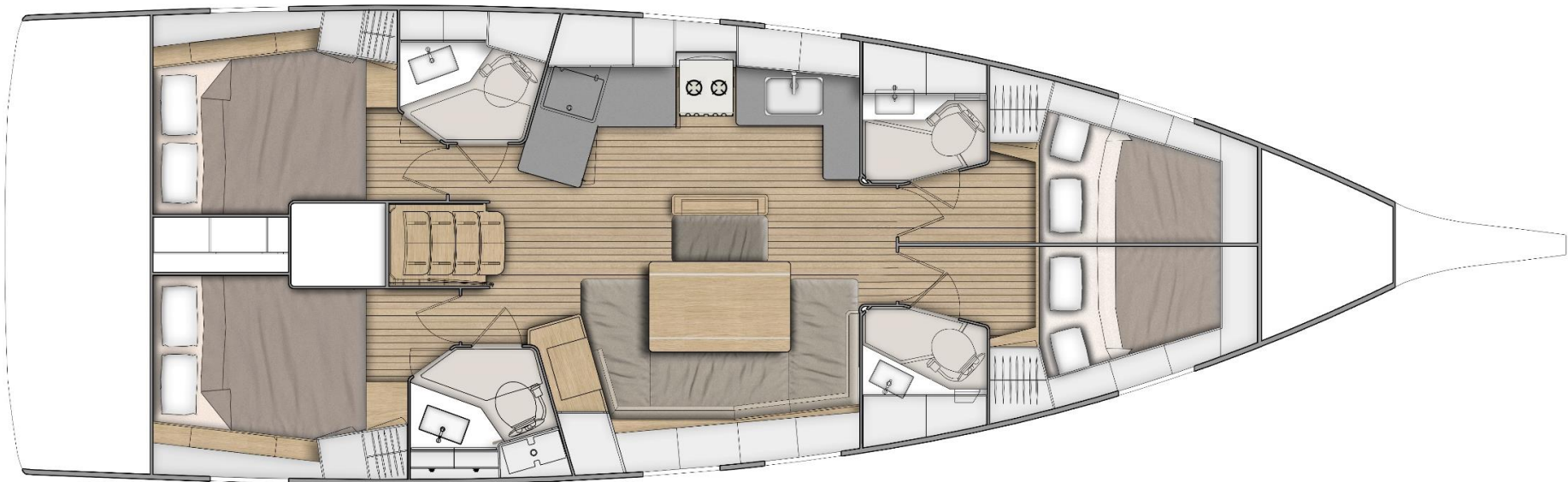
*Non contractual image. Illustrations may feature optional equipment available at additional cost.*

Commissioning - Delivery &  
Registration included





## OCEANIS 46.1



*Non contractual image. Illustrations may feature optional equipment available at additional cost.*



### STANDARD EQUIPMENT

Twin rudders hung with stainless steel stock  
 White coloured hull - Grey metal hull graphics  
 8 Hull portholes  
 Anodised aluminium mast, deck stepped with in-mast furling system, 2 Aft swept spreaders  
 1 Self tailing winch (H40.2 STA) at each helm stn.  
 12 V - 1 000 W vertical electrical windlass  
 6 Aluminium mooring cleats  
 1 Open stainless steel pulpit  
 2 Stainless steel pushpits  
 Double guard lines and stainless steel stanchions.  
 Side boarding gate on either side  
 Natural solid wood slatted cockpit benches  
 Solid wood slatted helm seats  
 2 Steering wheel consoles  
 1 Emergency tiller  
 1 Steering compass on the cockpit table  
 1 Cockpit shower with mixer tap  
 Fully opening transom, convertible to bathing platform  
 Natural solid wood decking on swim platform  
 Stainless steel, removable bathing ladder  
 Alpi Mahogany interior wood  
 Parquet type laminated floors  
 Stainless steel sink 2 rectangular basins  
 Gas cooker 2 burners  
 85 litre ice box, top opening  
 130 litre refrigerator (12 V), front opening  
 Manual toilets w holding tanks  
 USB & 230V sockets  
 Engine Yanmar Diesel: 80HP, Common Rail  
 Fixed three blades propeller  
 2 service batteries (120 Ah) - 1 Engine battery (120 Ah)  
 LED navigation lights  
 Pressurised electric water pump - Expansion tank  
 Electric & Manual bilge pump

### OPTIONS INCLUDED

4 CABINS 4 HEADS VERSION - ALPI MAHOGANY  
 WINNER SILVER 139 UPHOLSTERY IN SALOON  
 BOWTHRUSTER  
 EXTRA WATER TANK (200 L)  
 COCKPIT SOLID WOOD SLATTED FLOOR  
 SOLID WOOD DECKING ON COMPANIONWAY SUNBEDS

### PACKS INCLUDED

*TRIM LEVEL CHARTER 2019*  
 Bow stainless steel protection  
 Aft transom protection  
 Cockpit bench extensions + 2 halyard bags below  
 Luxe polyester cockpit table with central storage, stainless steel handrail, lighting  
 Hifi: Fusion + interior loudspeakers & waterproof exterior speakers  
 Double berth in saloon  
 Galley: sea water/fresh water foot pump  
 Galley: refrigeration system, 12 V, in top-opening icebox (for storage below 0°C)  
 Galley: Compact sink cover Clay with cutting board  
 Saloon + Cabins: fans  
 Mosquito nets on portholes  
 Saloon and Galley: LED indirect lighting  
 Battery charge display, Navicolor screen (3,5")  
 3 x 100 amperes additional service batteries  
 1 x 40 amperes battery charger  
 Batteries AGM in lieu of standard

### PACKS INCLUDED cont.

*UPWIND AND DOWNWIND PACK*  
 2 Genoa winches (H50.2 STA)  
 German system (Two-way mainsheet at the helm station)  
 Polyester bowsprit with integrated anchoring gear and bobstay (for Code 0 and asymmetric spinnaker)  
 Symmetrical spinnaker rigging  
 2 Additional halyard clutches  
 Genoa sheet tracks on side decks  
 Dacron genoa on furler (to replace the standard self-tacking jib)

### 2019 COASTAL PACK - B&G

Starboard steering console: 1 Multifunction touchscreen Zeus 7" wide wireless (GPS, Chart plotter, Chart reader - Navionics Silver cartography included)  
 Windex Windvane  
 Wind Sensor (Windvane, Anemometer)  
 Sensor (Log, Speedometer, Temperature)  
 NAC3 autopilot + Starboard helm console control  
 Fixed V50 VHF, AIS receiver function  
 Cadet Grey Protective cover:  
 to starboard: Steering wheel & console  
 to port: Steering wheel

### 2019 OFFSHORE PACK - B&G

Port steering console: 1 Multifunction touchscreen Zeus 7" wide wireless (GPS, Chart plotter, Chart reader - Navionics Silver cartography included)  
 1 Triton 2 display  
 WR10 Wireless autopilot remote control  
 PC interface  
 Cadet Grey Protective cover: Steering wheel & console



## Windex

Antifouling with double epoxy treatment  
First filling & engine service  
Spare fuel cannister, 5 liter

Mooringrope 2\*15 m, 2\*20 m & 1\*50 m

Fenders \* 8

Baloon fender

Gangway

DELTA anchor & Anchor connector

Anchor chain 80 meter

Anchor thief

Hook for releaving anchor windlass + 4m rope

Second anchor & 10 + 2 m chain w. Schackles.

Boat hook

Power cord for shore supply (30 m)

Life raft. (RNOG)

Horse shoe life bouy, holder & light

Rescue sling (Life sling)

Emergency flares

Fire extinguishers

Wire cutter

Safety harnesses + rope with hooks (RNOG / 2)

Lifewest (RNOG + 1 junior)

Radar reflector

Wooden plugs

Fog horn

First aid kit

Seacharts (full set)

Navigational equipment (traveller, ruler, pen etc.)

Binoculars

Loggbok

Local waters pilot

Barometer and watch

Nationality flag + Navigare flag

Signal flags

Torch (flash light) w. spare batteries

Flashlight 12 volt

Mask, snorkel and fins

Bosun`s chair

Spares; engine oil, 3 \* filter, engine belt & impeller

Toolbox with tools

Galley and cooking equipment

Glas, wine glas & cups (RNOG)

Knives, forks and spoons (RNOG)

Plates - big, small and deep (RNOG)

Gasol bottles \* 2

Sheets, pillowcases, towels & kitchen towels (RNOG)

Blankets and pillows (RNOG)

Hangers (cabins x 6)

Water hose 15 m, with watergun

Deck brush and bucket

Toilet brush (nr of WC)

Dustbin (nr of WC)

Cleaing equipment (interior)

Funnel, Sponge and container

Navigare wifi system 3G/4G

Bimini & Sprayhood

Charter grade cushions:

**COCKPIT CUSHIONS WITH SEATBACKS**

**2 SUNBATHING MATTRESSES**